

Match pictures and terms

DNA

nucleosomes

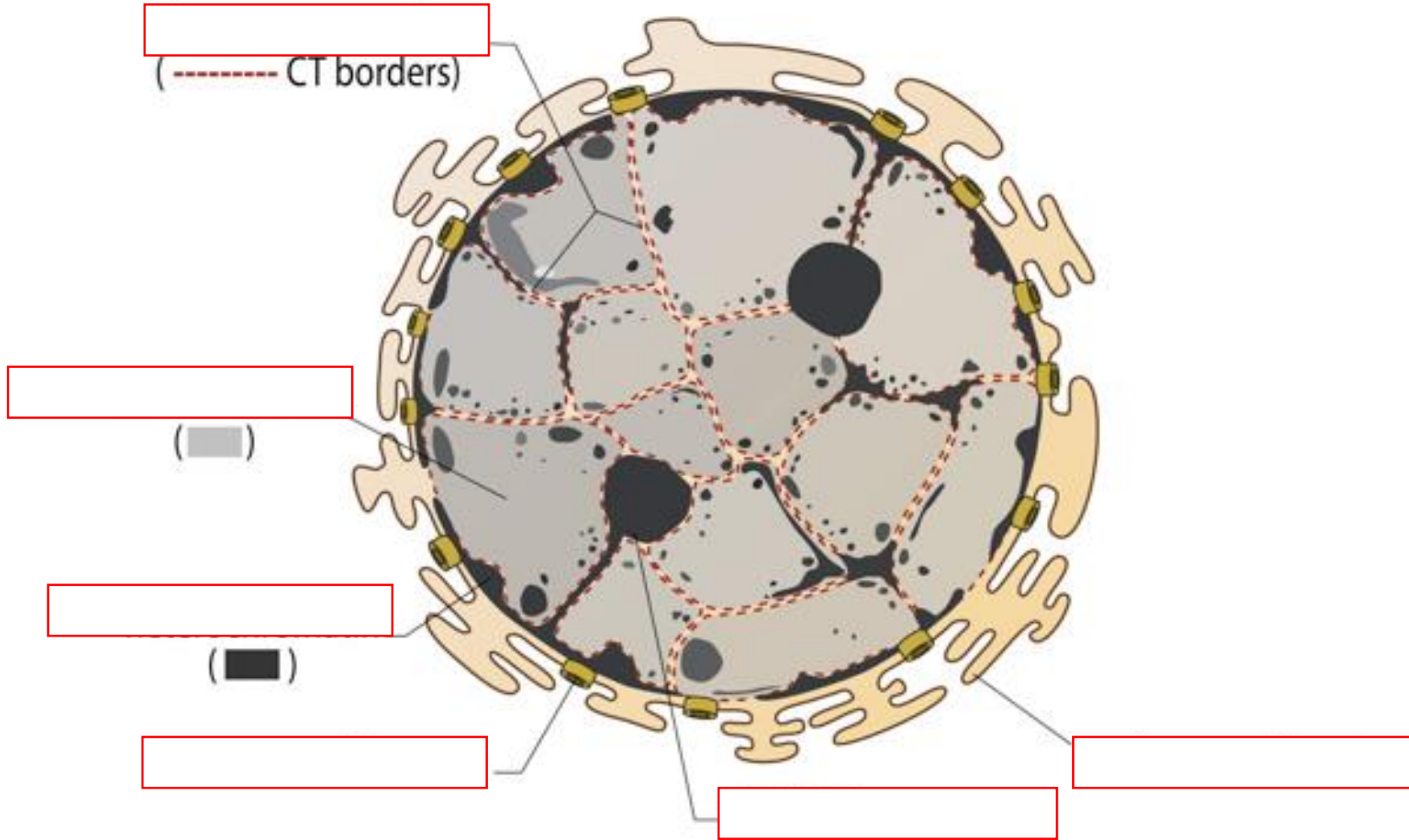
solenoid or zigzag

interphase chromosome

metaphase chromosome

Match pictures and terms

A. Interphase nucleus



Chromosome territory

Euchromatin

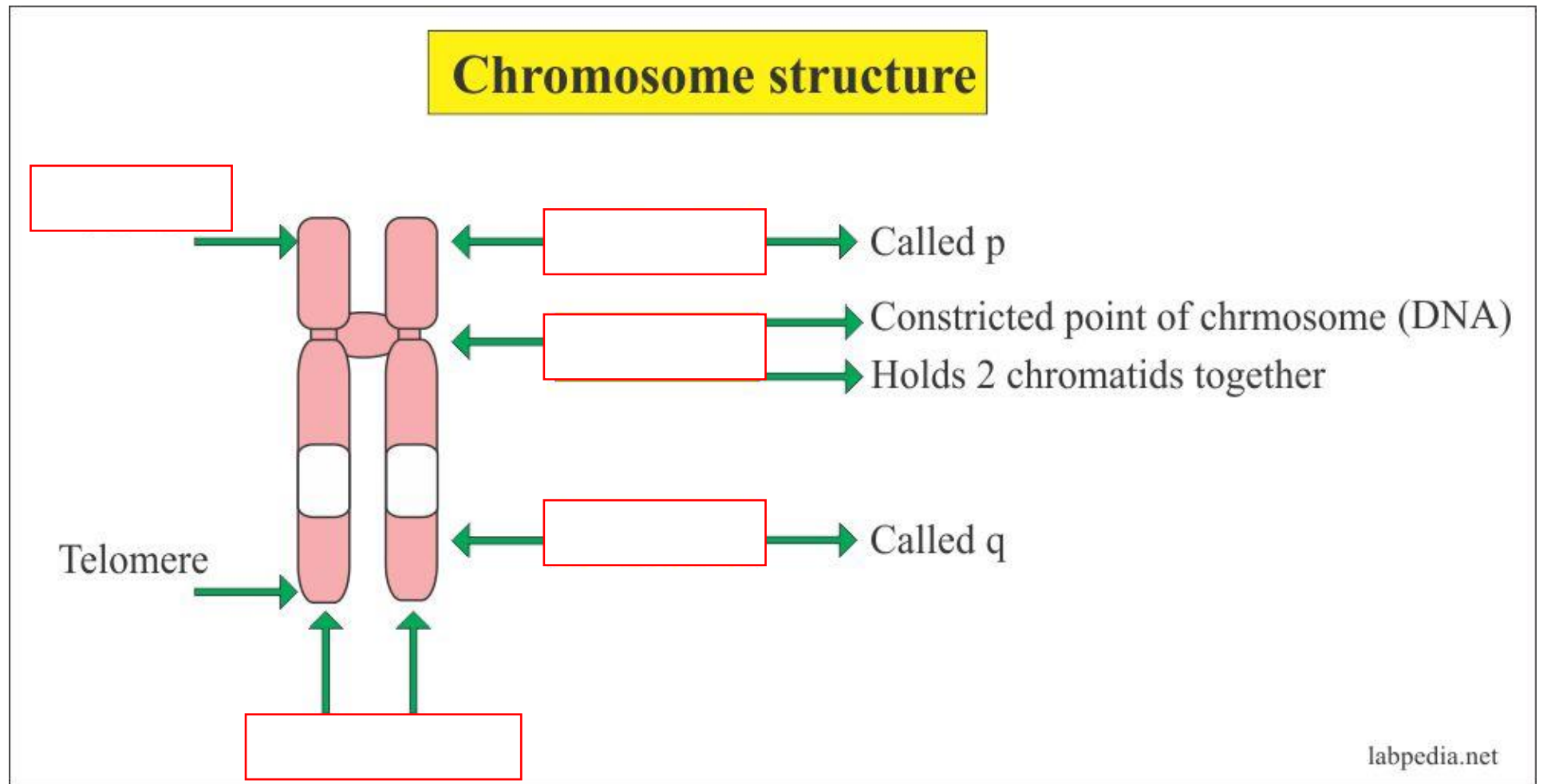
Heterochromatin

Nuclear pore

Nucleolus

Nuclear membrane

Match pictures and terms



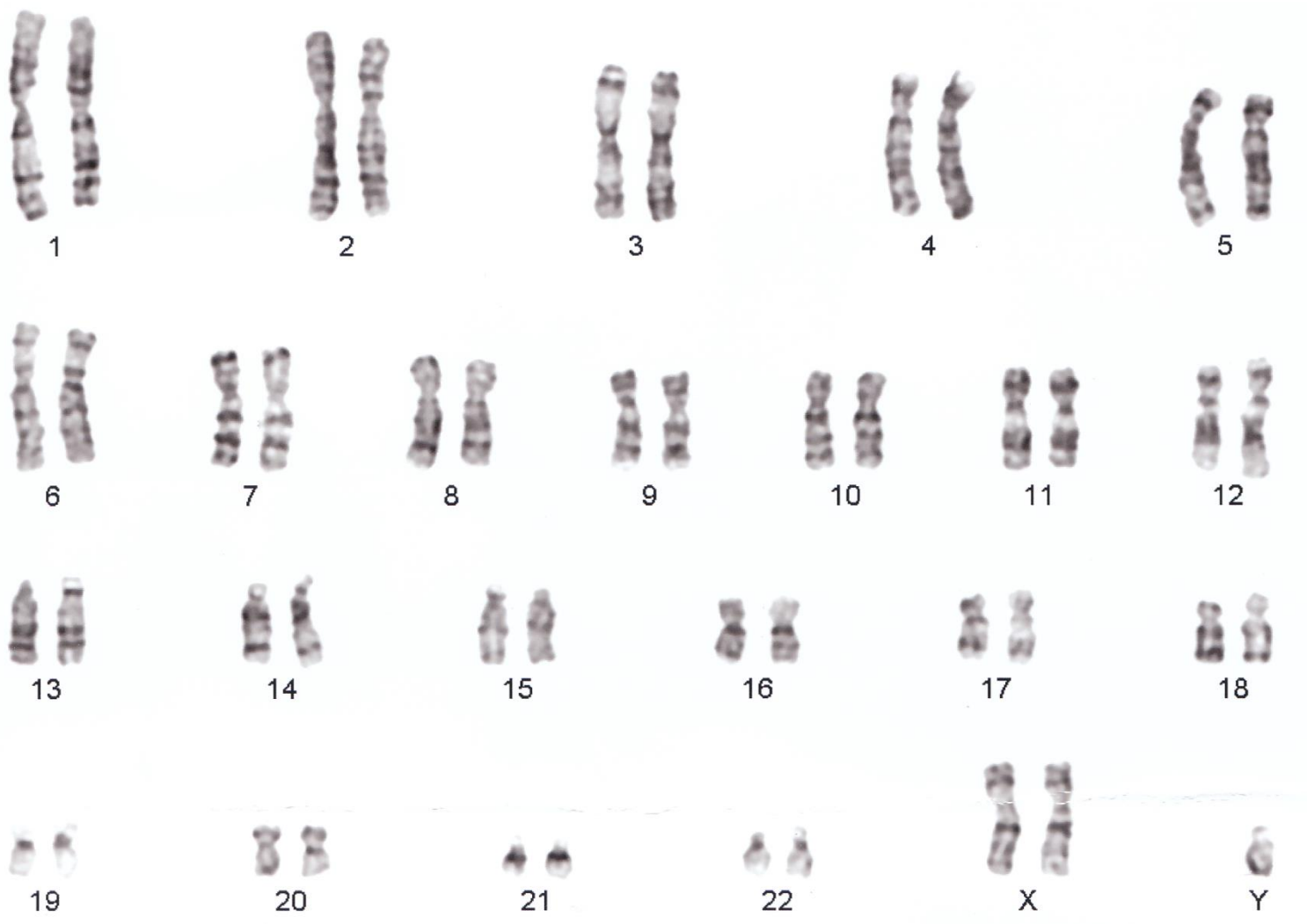
CHROMATIDS

TELOMERE

LONG ARM

CENTROMERE

SHORT ARM

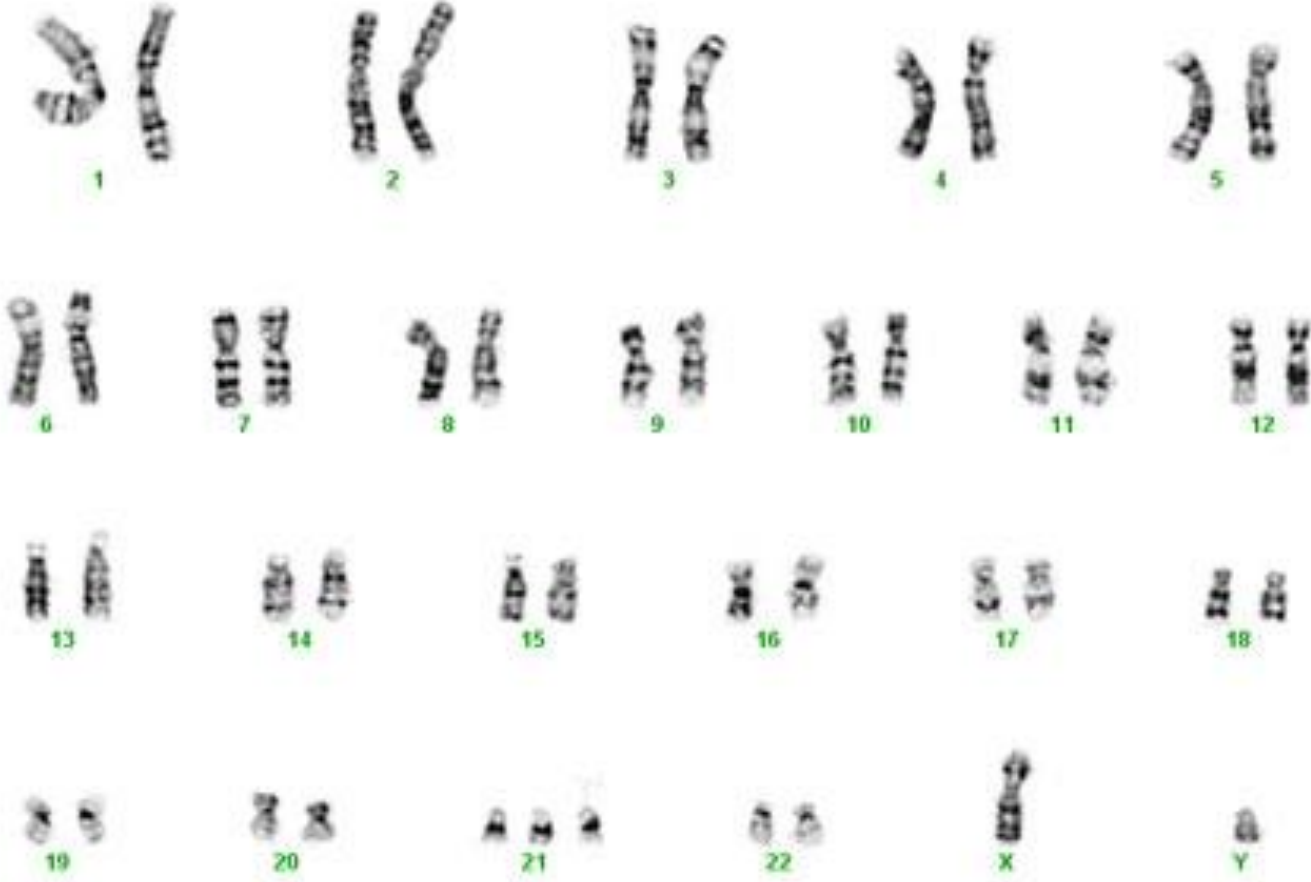


Check karyotype:

1. Determine the sex
.....

2. Determine the pathology
.....

3. What are the symptoms of pathology?
.....
.....
.....
.....
.....
.....

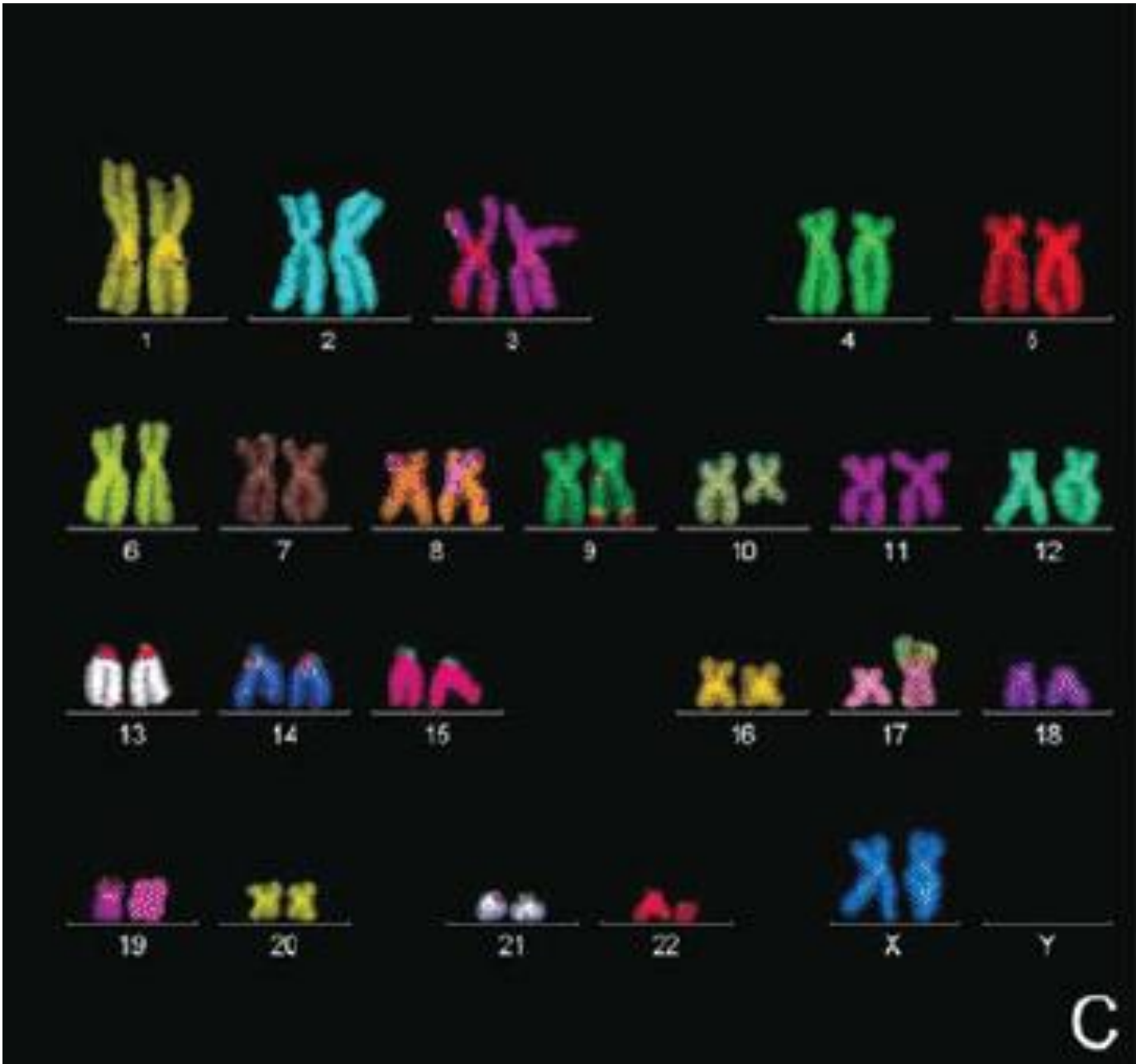


Check karyotype:

1. Determine the sex

2. Determine the pathology

3. What are the symptoms of pathology?

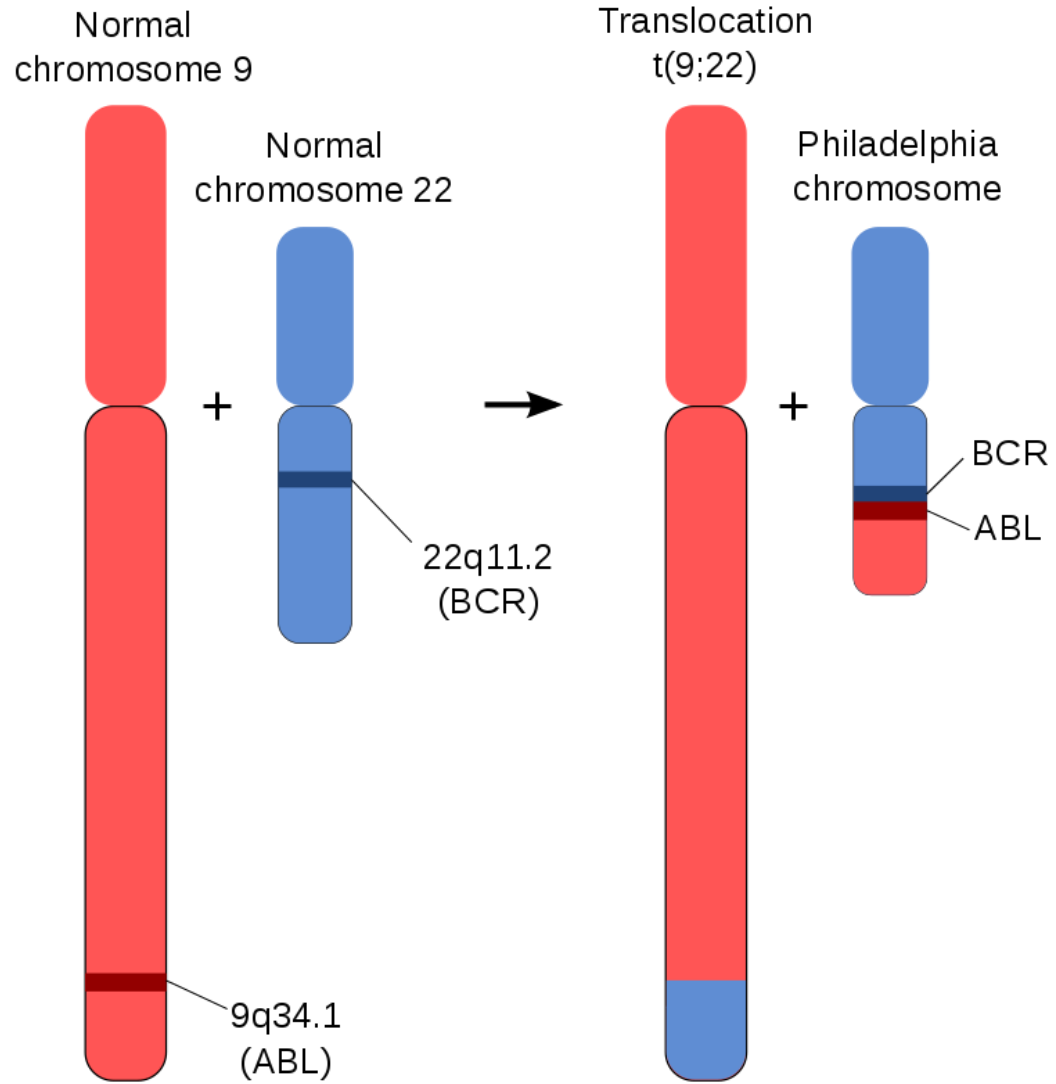


Check karyotype:

1. Determine the sex
.....

2. Determine the pathology
.....

3. What are the symptoms of pathology?
.....
.....
.....
.....
.....



The Philadelphia chromosome is:

.....

.....

.....

.....

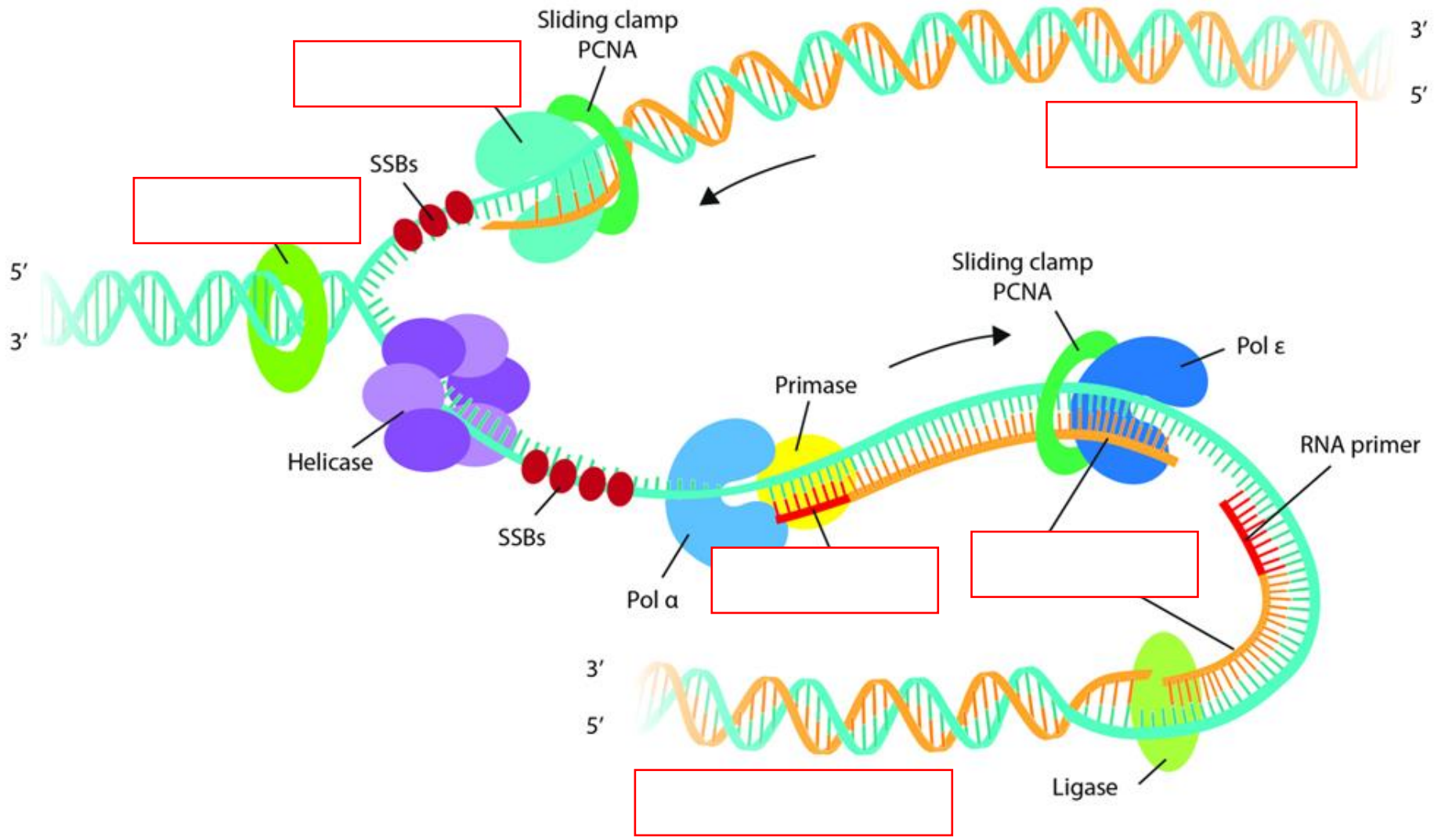
.....

.....

.....

.....

Match pictures and terms



LEADING STRAND

LAGGING STRAND

TOPOISOMERASE

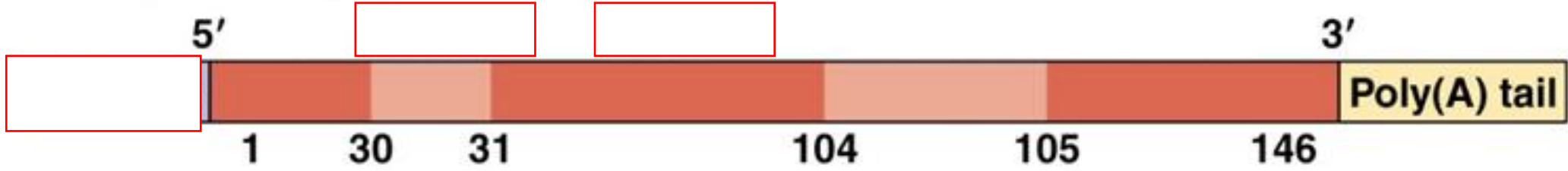
OKAZAKI FRAGMENTS

RNA PRIMER

POLYMERASE

Match pictures and terms

Primary transcript (pre-mRNA)



Introns excised and exons spliced together

mRNA



© 2012 Pearson Education, Inc.

POLY(A) TAIL

INTRON

EXON

G-CAP

Match RNA types with their functions:

RNA	Function
mRNA	
tRNA	
	Forms rybosomes
hnRNA	
snRNA	

rRNA

Undergoes translation

Transports aminoacids during translation

Is a part of spliceosome

Is a primary transcript for mRNA, rRNA, tRNA

Match polymerases with their functions and location:

POLYMERASE	LOCATION	FUNCTION
RNA polymerase I		
RNA polymerase II		
RNA polymerase III		
Mitochondrial polymerase		

